



BUCKEYE POWER CURRENT

March 2015

Clean Coal Powers New Shale Plant



When Blue Racer Midstream's Berne I shale natural gas processing plant came online in December 2014, the Monroe County, Ohio facility was powered up by South Central Power. Like most U.S. shale developments, the Ohio Utica and Marcellus shale facilities are mainly in rural areas with sparse populations.

Blue Racer's 60 MW shale natural gas processing plant in Monroe County, Ohio is powered by South Central Power.

So how was a local electric cooperative able to step up with 60 megawatts of reliable, clean power? Through its membership in Buckeye Power, South Central Power provided Blue Racer Midstream:

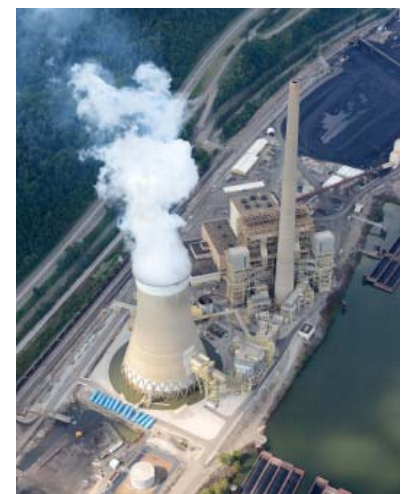
- Ten year forecast of competitive wholesale power rates from resources that utilize clean technology and produce best-in-class performance.
- Diverse mix of generation sources that offer redundant power supply and capacity to grow.
- Coordination and timely completion of load-serving network transmission investments.

Best-in-class clean coal plant a result of decade-long technology investment.

Buckeye Power is the generation and transmission cooperative that is jointly owned by the 25 electric distribution cooperatives (including South Central) that get their electricity from Buckeye Power.

Buckeye Power's flagship Cardinal Power Station is rated as one of the cleanest power plants of its kind in the U.S. and is a "best in class" world performer in reduction of emissions – sulfur dioxide, nitrogen oxides, mercury, and particulates – with the completion of selective catalytic reduction (SCR) and flue gas desulfurization (FGD) systems.

Over a period of 10 years, Buckeye Power spent approximately \$1 billion on the SCR and FGD systems and other upgrades at the Cardinal Station to achieve these best-in-class results.



Buckeye Power's flagship Cardinal Power Station is rated as one of the cleanest power plants of its kind in the U.S.

Clean power investments included in competitive rates.

The Ohio electric cooperatives' current rate structure already includes the cost of the scrubbers and other environmental improvements so customers enjoy predictable future rates.

The addition of the recently-completed scrubbers means the Cardinal plant is able to reduce emissions while using affordable Ohio coal. Cardinal continues to be the primary source of low-cost base load electricity for Buckeye Power members. A 2004 engineering report forecasted the useful life of the station to at least 2040.

Reliable power with capacity to serve significant new loads.

The second of three planned shale natural gas processing plants at Blue Racer's Berne facility is currently under construction. The 60 megawatts Blue Racer will require is comparable to the usage of an auto assembly plant.

Buckeye Power owns two units at the Cardinal Station rated at 590 and 620 megawatts and has a growing portfolio of alternative generation sources. In addition, Buckeye owns two natural gas-fired peaking power plants.

This diverse generation mix provides Ohio's electric cooperatives and their member-consumers with continued access to reliable power and the capacity to add significant new electricity loads

Buckeye Power and Ohio's Electric Cooperatives can help with:

- Comprehensive site and building portfolios
- Preliminary site studies
- Site search tours
- Assistance in identifying financial incentives
- Electric rate analyses
- Community profiles
- State and local government contacts
- Contractor introductions

Look for Us:

Industrial Asset Management Council (IAMC) Spring 2015 Professional Forum
April 25 - 29, 2015
Palm Desert, California



Contact Us
Dennis Mingyar
Buckeye Power Inc.
www.buckeyepowersites.com
6677 Busch Boulevard
Columbus, OH 43229
614-430-7876
dmingyar@buckeyepower.com